

## 7. USE OF WATER ISOTOPE TRACERS IN HIGH LATITUDE HYDROLOGY AND PALEOHYDROLOGY

THOMAS W.D. EDWARDS (twdedwar@uwaterloo.ca)  
*Department of Earth Sciences*  
*University of Waterloo*  
*Waterloo, Ontario*  
*N2L 3G1, Canada*

BRENT B. WOLFE (bwolfe@wlu.ca)  
*Department of Geography and Environmental Studies*  
*Wilfrid Laurier University*  
*Waterloo, Ontario*  
*N2L 3C5, Canada*

JOHN J. GIBSON (john.gibson@ec.gc.ca)  
*Water and Climate Impacts Research Centre*  
*Department of Geography*  
*University of Victoria*  
*Victoria, British Columbia*  
*V8W 3P5, Canada*

and

DAN HAMMARLUND (dan.hammarlund@geol.lu.se)  
*GeoBiosphere Science Centre*  
*Quaternary Sciences*  
*Lund University*  
*Sölvegatan 12*  
*SE-223 62 Lund*  
*Sweden*

*Key words:* Stable isotopes,  $\delta^{18}\text{O}$ ,  $\delta^2\text{H}$ , Meteoric Water Line, Local Evaporation Line, Hydroclimatology, Hydrology, Lake water balance, Water isotope archives, Paleohydrology, Paleoclimatology

### Introduction

The stable isotopes  $^2\text{H}$  and  $^{18}\text{O}$  are highly valuable tracers for investigating present and past hydrology and hydroclimatology because of the existence of robust physically-



based understanding of isotopic partitioning in the global water cycle (e.g., Rozanski et al. 1993; Araguás-Araguás et al. 2000). Although applicable in any geographic location, water isotope data are particularly effective for characterizing hydrology and hydroclimatology in remote regions, especially at high latitudes, providing information about runoff generation processes and surface water balance that may be difficult or impossible to acquire using other methods (e.g., Burgman et al. 1987; Gibson et al. 1993, 2002; Wolfe and Edwards 1997; Gibson 2001, 2002; Gibson and Edwards 2002; Leng and Anderson 2003; Maric 2003). Stratigraphic records of water isotope data in lake sediments can also be used to reconstruct or constrain past hydrology and hydroclimatology at high latitudes, relying on the same mechanistic principles and benefiting from the framework provided by knowledge and inference about global paleo-isotope fields (e.g., MacDonald et al. 1993, this volume; Edwards et al. 1996; Wolfe et al. 1996, 2000, 2003; Anderson et al. 2001; Sauer et al. 2001a; Shemesh et al. 2001; Hammarlund et al. 2002; Hu and Shemesh 2003).

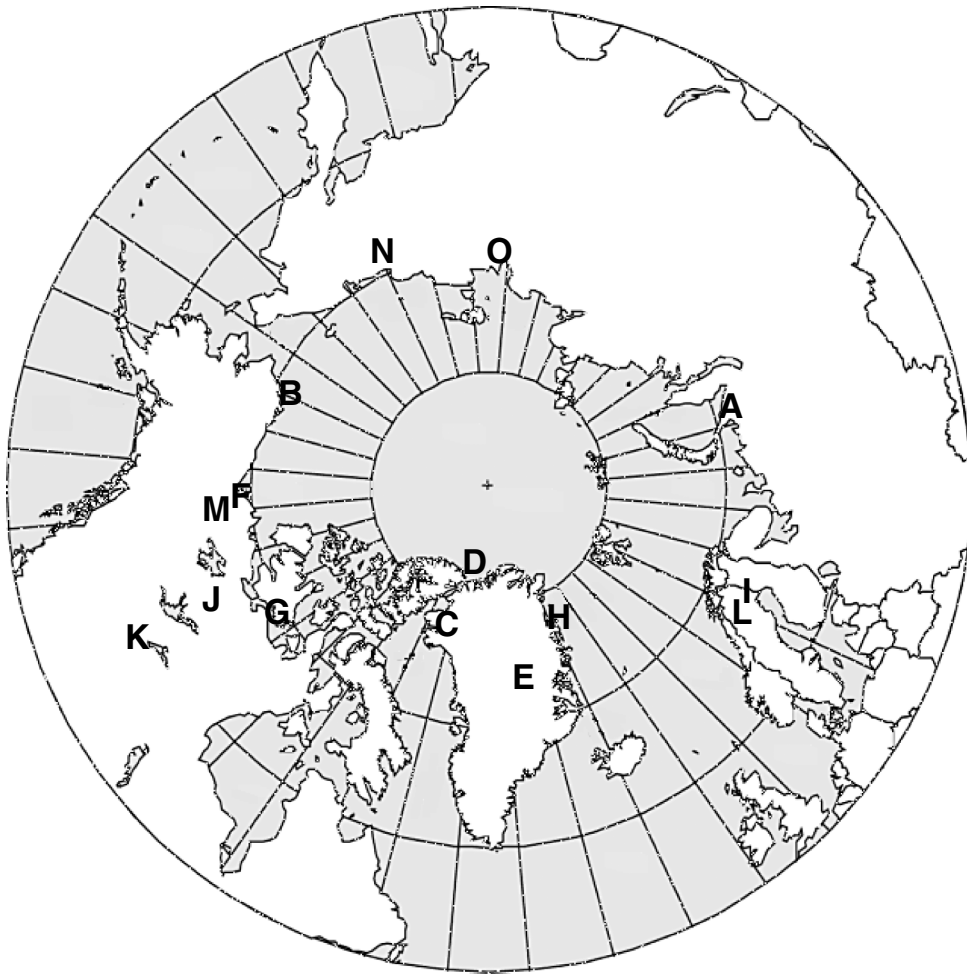
This chapter briefly reviews key aspects of the use of stable water isotope tracers in hydrological and paleohydrological investigations applicable to the study of long-term environmental change in arctic and antarctic lakes, illustrated by selected examples from recent investigations in northern Canada and Sweden (see Figure 1 for locations of sites mentioned in the text). The aim is to provide the reader with basic working knowledge of the major controls on the isotopic partitioning of water in high latitude catchments and the nature of the information that can be gleaned from records of the isotopic composition of paleowaters obtained from lake sediment archives in such environments.

### **Isotopic labelling in the hydrological cycle**

#### *Background*

Isotopic partitioning (fractionation) of water in the hydrological cycle arises because of differences in the behaviour of water molecules containing various combinations of the naturally occurring stable isotopes of hydrogen ( $^1\text{H}$ ,  $^2\text{H}$ ) and oxygen ( $^{16}\text{O}$ ,  $^{17}\text{O}$ ,  $^{18}\text{O}$ ). Most isotope hydrology studies are based on variations in the relative abundances of the two rare heavy isotopic species (isotopomers) containing a single  $^2\text{H}$  or  $^{18}\text{O}$  atom ( $^1\text{H}^2\text{H}^{16}\text{O}$  and  $^1\text{H}^1\text{H}^{18}\text{O}$ ) with respect to common light water ( $^1\text{H}^1\text{H}^{16}\text{O}$ ). Isotopic compositions are expressed conventionally as  $\delta$ -values, representing deviation in per mil (‰) from the isotopic composition of a specified standard, such that  $\delta^2\text{H}$  or  $\delta^{18}\text{O} = 1000((R_{\text{sample}}/R_{\text{standard}}) - 1)$ , where  $R$  refers to the  $^2\text{H}/^1\text{H}$  or  $^{18}\text{O}/^{16}\text{O}$  ratios in sample and standard, respectively. The most widely used standard in hydrological applications is Vienna Standard Mean Ocean Water (VSMOW), which approximates the bulk isotopic composition of the present-day global ocean reservoir, and hence has  $\delta^2\text{H}$  and  $\delta^{18}\text{O}$  values both defined to be exactly 0 ‰. This is a logical datum for hydrological studies since evaporation from the oceans is the fundamental source of global atmospheric moisture, which provides the precipitation input for continental water cycling, and the isotopic composition of the oceans is essentially invariant at human timescales. Studies using limnic carbonates (e.g., sedimentary calcite, mollusc shells, ostracode valves) as oxygen-isotope archives also make use of the Vienna Pee Dee Belemnite (VPDB)

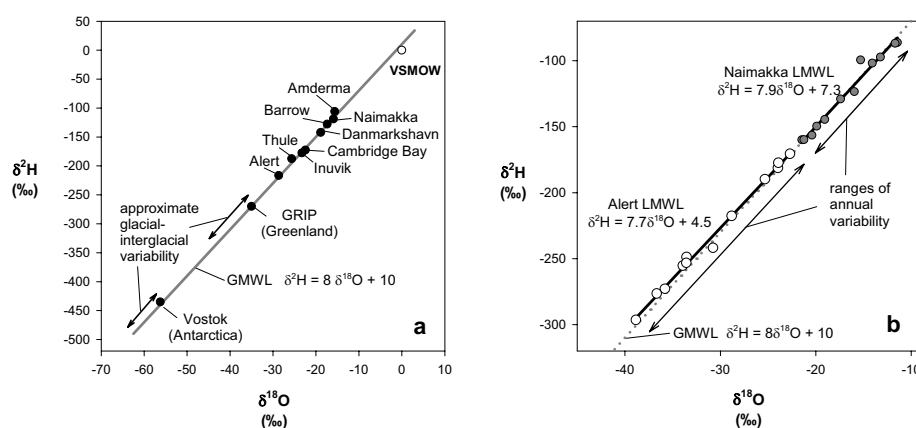
standard, which approximates the isotopic composition of modern marine carbonate.  $\delta^{18}\text{O}$  values expressed relative to the VSMOW and VPDB standards are related such that  $(1000 + \delta^{18}\text{O}_{\text{sample/VSMOW}})/(1000 + \delta^{18}\text{O}_{\text{sample/VPDB}}) = 1.03086$  (Fritz and Fontes (1980) or Clark and Fritz (1997) are recommended for further information about isotopic standards and nomenclature).



*Figure 1.* Map of the circumpolar North, showing locations noted in subsequent figures and text. Amderma (**A**), Barrow (**B**), Thule (**C**), Alert (**D**), GRIP (**E**), Inuvik (**F**), Cambridge Bay (**G**), Danmarkshavn (**H**), Naimakka (**I**), Exeter Lake (**J**), Peace-Athabasca Delta (**K**), Lake Tibetanus (**L**), Mackenzie River Delta (**M**), Kolyma River Delta (**N**), Lena River Delta (**O**).

*Isotopic labelling of precipitation – Global and Local Meteoric Water Lines*

The distribution of isotopes in precipitation and surface waters is characterized by the existence of strongly linear relations between  $\delta^2\text{H}$  and  $\delta^{18}\text{O}$  values over a broad range of spatial and temporal scales, reflecting systematic mass-dependent partitioning of water molecules in the hydrologic cycle. The most striking expression of the coupling between hydrogen- and oxygen-isotope labelling of water is the Global Meteoric Water Line (GMWL) (Craig 1961), described by  $\delta^2\text{H} = 8\delta^{18}\text{O} + 10$ , which closely approximates the observed relation between mean annual amount-weighted precipitation  $\delta^2\text{H}$  and  $\delta^{18}\text{O}$  world-wide (Figure 2a). The existence of this fundamental baseline is consistent with the notion that global atmospheric moisture arises primarily from a well-mixed source (i.e., the subtropic ocean surface) and undergoes progressive rain-out of mass and heavy isotopes during subsequent poleward atmospheric transport. The linearity and slope of the GMWL reflect the pervasive influence of temperature-dependent equilibrium partitioning of the two heavy isotopic species between atmospheric vapour and



*Figure 2.* (a) Isotopic labelling of weighted-mean annual precipitation ( $\delta_p$ ) collected at selected high latitude stations, based on data compiled by Birks et al. (2002) from the Global Network for Isotopes in Precipitation (GNIP), operated jointly by the International Atomic Energy Agency and the World Meteorological Organization (IAEA/WMO 2001). Modern mean annual composition of precipitation for ice core sites from Greenland and Antarctica are also indicated, with arrows showing the approximate ranges of variability between average glacial and interglacial conditions (ice core data archived at the World Data Centre for Paleoclimatology, Boulder, Colorado, USA: <http://www.ngdc.noaa.gov/paleo/data.html>). Vienna Standard Mean Ocean Water (VSMOW) is also shown, offset slightly below the Global Meteoric Water Line (GMWL). (b) Isotopic labelling of mean composite monthly precipitation at Alert (Canada) and Naimakka (Sweden), based on data compiled by Birks et al. (2002). Data from both stations are strongly localized along the GMWL (dotted line), defining individual Local Meteoric Water Lines (LMWLs) having slopes slightly less than 8 and large ranges of monthly variability. Maximum and minimum mean composite monthly  $\delta^2\text{H}$  and  $\delta^{18}\text{O}$  values at both stations occur, respectively, in July and January. Note that the GMWL commonly provides an excellent proxy for the LMWL in the absence of direct isotopic characterization of local precipitation, especially at high latitudes.

condensing precipitation. This can be modelled conceptually as a multi-step Rayleigh-type open-system distillation process, leading to the combination of low amount and depleted heavy-isotope content (low  $\delta$  values) of precipitation at high latitudes. This important coupling of mass and isotope depletion is well-illustrated by comparison of the global fields of precipitable moisture and precipitation  $\delta$  values (e.g., see Figure 2 of Birks et al. 2002). It is also reflected indirectly in the spatial relations that are observed between precipitation  $\delta$  values and air temperatures at mid- to high latitudes, often used as the basis for paleotemperature reconstruction from the isotopic composition of paleoprecipitation stored in glacier ice or groundwater (e.g., Rozanski et al. 1993, 1997; Schotterer et al. 1996).

Amount-weighted  $\delta^2\text{H}$  and  $\delta^{18}\text{O}$  values of precipitation received over the year at individual sites also commonly plot in strongly linear clusters in  $\delta^2\text{H}$ - $\delta^{18}\text{O}$  space close to the GMWL, and best-fit LMWLs drawn through these clusters can provide highly useful characterization of local isotopic input functions for hydrological studies (Figure 2b). Substantial seasonal variability is typical along LMWLs at mid- to high latitudes, especially in cold regions, with winter precipitation generally strongly depleted and more variable in heavy-isotope content compared to that received during the summer season.

Additional isotopic characterization of local precipitation is provided by the derived "deuterium excess" parameter ( $d\text{-excess} = \delta^2\text{H} - 8\delta^{18}\text{O}$ ), which gives an indication of location in  $\delta^2\text{H}$ - $\delta^{18}\text{O}$  space relative to the GMWL reference ( $d\text{-excess}_{\text{GMWL}} = +10\text{‰}$ ). This characteristic feature of the distribution of isotopes in precipitation reflects the combined influence of equilibrium and kinetic isotopic partitioning as atmospheric moisture is generated by evaporation from the sea surface, which tends to be conserved during subsequent transport and distillation. Local precipitation typically has a seasonal cycle marked by lower  $d\text{-excess}$  values in summer, often attributable to slight evaporative isotopic enrichment of falling raindrops, and higher  $d\text{-excess}$  in winter due to kinetic effects associated with ice formation in clouds (Merlivat and Jouzel 1979; Jouzel and Merlivat 1984).

#### *Isotopic enrichment of surface waters - Local Evaporation Lines*

Strong coupling of hydrogen- and oxygen-isotope variations is also evident from the development of characteristic heavy-isotope build-up in surface waters undergoing evaporation. The isotopic signatures of neighbouring water bodies receiving input of similar isotopic composition typically lie along more-or-less well-defined linear arrays in  $\delta^2\text{H}$ - $\delta^{18}\text{O}$  space, termed Local Evaporation Lines (LELs; Figure 3), which deviate from the LMWL along slopes that usually range between 4 and 6, depending on local atmospheric conditions during the thaw season (primarily relative humidity, temperature, and the isotopic composition of ambient moisture). Intersection of the LEL with the LMWL often provides an excellent approximation of the weighted-mean isotopic composition of input waters to a catchment ( $\delta_{\text{I}}$ ), while displacement of a given lake water ( $\delta_{\text{L}}$ ) along the LEL provides an index of water balance, which can be

quantified in terms of evaporation/inflow ratio ( $E/I$ ) via isotope-mass balance considerations, as described for hydrogen or oxygen isotope data by:

$$E/I = (\delta_I - \delta_L)/(\delta_E - \delta_L) \quad (1)$$

where  $\delta_E$  represents the isotopic composition of the evaporative flux.  $\delta_E$  can be evaluated using the well-validated linear resistance model of Craig and Gordon (1965), which accounts for the differing volatilities of the water isotopomers as a combination of mass-dependent variations in equilibrium vapour pressures ("equilibrium effects") plus variations in molecular diffusivities arising from the combination of differing absolute mass and its distribution within water molecules ("kinetic effects").

Assuming negligible resistance to liquid-phase mixing,  $\delta_E$  can be calculated by:

$$\delta_E = ((1 + 10^{-3}\varepsilon^*)\delta_L - h\delta_A - \varepsilon)/(1 - h + 10^{-3}\varepsilon_K) \quad (2)$$

where  $\varepsilon^*$  and  $\varepsilon_K$  represent the respective equilibrium and kinetic effects, expressed as per mil (‰) separations between the liquid and vapour phases,  $\varepsilon = \varepsilon^* + \varepsilon_K$ , and  $h$  is the atmospheric relative humidity normalized to the saturation vapour pressure at the temperature of the air-water interface.  $\varepsilon^*$  values for both hydrogen and oxygen can be estimated from the empirical relations derived by Horita and Wesolowski (1994). For  $\delta^2\text{H}$ ,  $\varepsilon^* = 1158.8(T^3/10^9) - 1620.1(T^2/10^6) + 794.84(T/10^3) - 161.04 + 2.9992(10^9/T^3)$  and for  $\delta^{18}\text{O}$ ,  $\varepsilon^* = -7.685 + 6.7123(10^3/T) - 1.6664(10^6/T^2) + 0.3504(10^9/T^3)$ , where  $T$  is the interface temperature (in K) and  $\varepsilon_K$  values for typical natural conditions can be accurately approximated as a function of relative humidity deficit (Gonfiantini 1986; Araguás-Araguás et al. 2000). For  $\delta^2\text{H}$ ,  $\varepsilon_K = 12.5(1 - h)$  and for  $\delta^{18}\text{O}$ ,  $\varepsilon_K = 14.2(1 - h)$ .

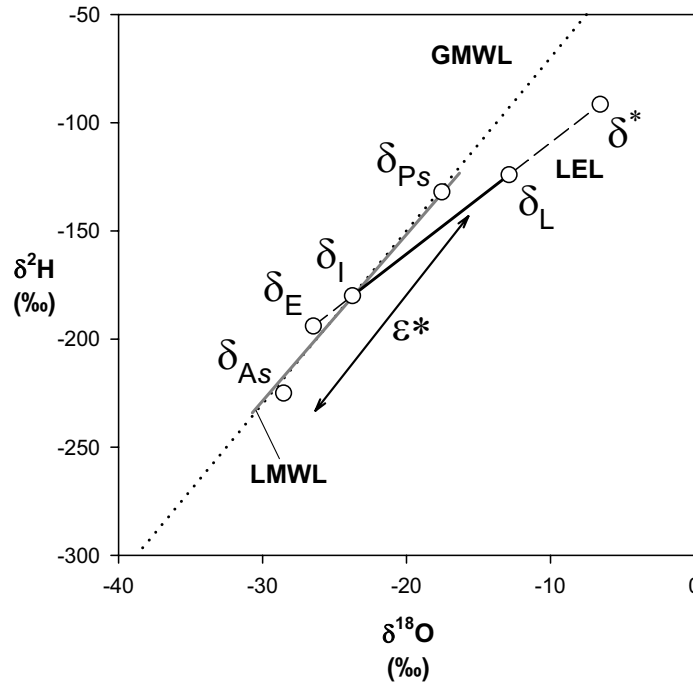
Equations (1) and (2) can be applied readily to assess instantaneous lake water balances in systems approximating hydrologic steady-state (e.g., Gibson 2001; Gibson and Edwards 2002) and a similar approach has been used for reconstructing or constraining past hydrologic variability from isotopic paleorecords (e.g., Edwards and Fritz 1988; Edwards and McAndrews 1989; MacDonald et al. 1993; Edwards et al. 1996; Wolfe et al. 2001a; Hammarlund et al. 2003). Substitution and rearrangement of equations (1) and (2) also yields:

$$E/I = [(1 - h + 10^{-3}\varepsilon_K)/(h - 10^{-3}\varepsilon)][(\delta_L - \delta_I)/(\delta^* - \delta_L)] \quad (3)$$

and

$$\delta^* = (h\delta_A + \varepsilon)/(h - 10^{-3}\varepsilon) \quad (4)$$

where  $\delta^*$  is the limiting isotopic enrichment attainable when a water body evaporates to near-zero volume, and has hence progressed well beyond hydrologic steady-state (see Figure 3). Modelling of the non-steady-state isotopic enrichment leading to  $\delta^*$  is also possible, affording information about mass and isotope fluxes under transient conditions (e.g., Gibson 2002).



*Figure 3.* Isotope labelling of water balance components, consistent with a steady-state E/I ratio of about 0.8 for a hypothetical high latitude lake, as described by equations (1)-(4) in the text (based on mean thaw season relative humidity and air temperature, respectively, of about 0.7 and 10°C). The isotopic composition of the lake water at the time of sampling ( $\delta_L$ ) is offset from the input water composition ( $\delta_I$ ) along a local evaporation line (LEL) having a slope of about 5. Although impossible to sample directly, mass conservation dictates that the evaporative flux from the lake ( $\delta_E$ ) lies on the extension of the LEL to the left of the LMWL. Evaporation and exchange occur in association with ambient atmospheric moisture during the summer evaporation season ( $\delta_{As}$ ), weighted for evaporation flux, which is in approximate isotopic equilibrium ( $\epsilon^*$ ) with the mean isotopic composition of summer precipitation ( $\delta_{Ps}$ ). Also shown is the limiting isotopic composition ( $\delta^*$ ), which is the maximum enrichment attainable under local atmospheric conditions as a water body approaches dryness, providing an indication of potential extreme non-steady-state behaviour. See Gibson and Edwards (2002) for additional discussion.

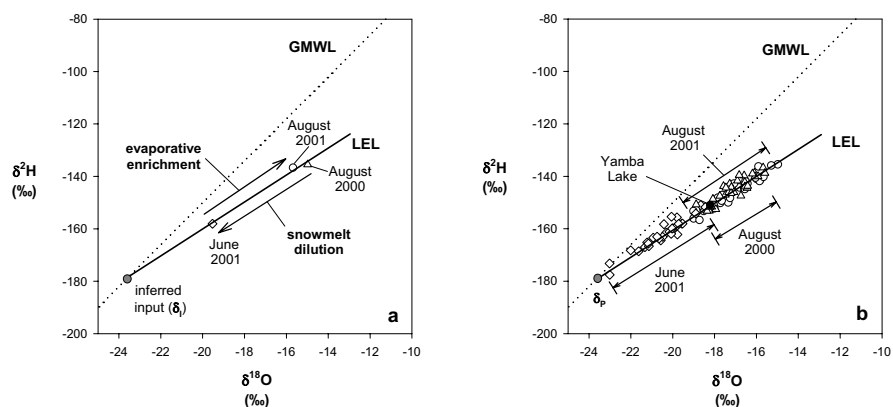
### Isotope hydrology at high latitudes

#### *Runoff generation and evaporation*

Hydrological processes at high latitudes are almost universally characterized by intense climatic and isotopic seasonality. Winter is typically marked by significant reduction or even total suspension of runoff generation because of deep frost penetration into soils

and the storage of highly  $^2\text{H}$ - and  $^{18}\text{O}$ -depleted seasonal precipitation in the frozen state within the overlying snow pack. In spite of dry atmospheric conditions, open-water evaporation is strongly suppressed by development of ice cover on lakes and all but the most rapidly flowing streams, though significant quantities of moisture may be recycled to the atmosphere via sublimation directly from the snow.

Warming in spring results in rapid melting of the snow pack, introducing pulses of isotopically-depleted runoff into streams and lakes, while still-frozen soils inhibit infiltration. Lake ice begins to thin, with early break-up on small, shallow water bodies leading to immediate onset of seasonal evaporation, while persistence of ice cover for days or weeks on large, deep lakes may suppress this process well into the thaw season. The isotopic expression of these two primary hydrological processes, snowmelt dilution



*Figure 4.* (a) Changing isotopic composition of a small upland tundra lake in the West Exeter Lake catchment ( $64^{\circ}07'\text{N}$ ,  $111^{\circ}01'\text{W}$ ), a headwater tributary of the Coppermine River, Canada, sampled on three occasions, immediately prior to freeze-up (late August 2000 and 2001) and during spring melt (mid-June 2001), reported by Maric (2003). The plot clearly shows the seasonal cycle produced by the opposing effects of snowmelt dilution and evaporative enrichment. Pronounced enrichment attained during summer 2000, conserved under winter ice cover, was strongly offset by isotopically depleted snowmelt runoff in spring 2001. Subsequent accumulated evaporative enrichment during summer 2001 almost exactly countered this effect, returning the lake to a composition very similar to that of the previous year. A best-fit line through these data points provides a good approximation of the LEL and the weighted-mean isotopic composition of input waters ( $\delta_i$ ). (b) Isotopic data from 30 small tundra lakes in the West Exeter Lake catchment (including the lake in Figure 4a), sampled on the same three occasions, showing pronounced clustering along the inferred LEL and the equivalent signals of snowmelt dilution and evaporative enrichment at catchment scale. The existence of limited scatter about the LEL reflects the occurrence of slightly differing evaporation lines for each lake, arising because of minor variations in snowmelt isotopic composition and varying contributions from rainfall and groundwater runoff, but generally also confirms that the LEL-GMWL intersection is a reasonable proxy for the isotopic composition of local weighted-mean annual precipitation (i.e.,  $\delta_i \approx \delta_p$ ). Also shown for comparison is the isotopic composition of outflow from Yamba Lake, a large lake downstream, which exhibited no measurable variation between the three sampling episodes, reflecting the damping of seasonal fluctuations because of its large volume (and hence long hydraulic residence time).

and evaporative enrichment, is often strongly evident at both lake and catchment scales, as shown for data from a selection of small upland lakes in the continental Low Arctic of northern Canada (Figure 4).

The isotopic evolution of a given lake during any particular thaw season is highly variable, depending on the fluxes and isotopic compositions of inputs (surface and subsurface runoff, inflow from upstream water bodies, precipitation falling directly upon the lake) and outputs (surface and subsurface outflow, evaporative flux), as well as the storage capacity within the lake itself, which acts to buffer seasonal variation (note data for Yamba Lake in Figure 4b). Annual thawing of the active layer in permafrost terrain also serves to suppress seasonal heavy-isotope build-up in small lakes by sustaining input of unevaporated precipitation recharged late in the previous thaw season (e.g., Bursey et al. 1991).

Although most upland lakes exhibit systematic seasonal cycles of snowmelt depletion and progressive evaporative enrichment, much less predictable seasonal isotopic behaviour may occur in lakes in fluvial and deltaic settings, as in the myriad water bodies along the Mackenzie, Kolyma, Lena and other major northern river systems. As illustrated in Figure 5, episodic high-water events (often induced by high spring runoff, local ice-jam flooding or excess precipitation in upstream reaches of the river) can significantly influence the seasonal isotopic cycling in a lake in such environments by abruptly introducing water of strongly differing composition originating outside of the lake's catchment.

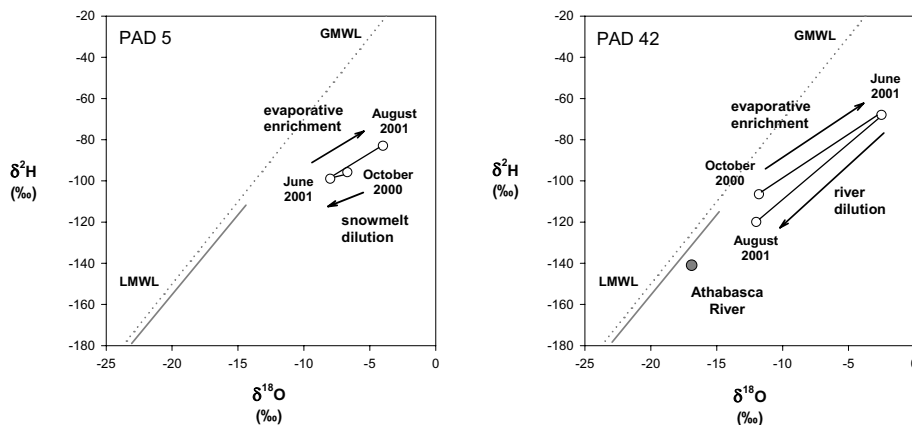


Figure 5. Strongly differing isotopic evolution of two lakes in the Peace-Athabasca Delta (PAD), Canada (55°08'N, 111°05'W), sampled immediately prior to freeze-up in October 2000 and again in early June and late August 2001. The relative depletion of PAD 5 between October 2000 and June 2001 reflects the overriding influence of snowmelt dilution, likely offset somewhat by evaporative enrichment. In contrast, evaporation completely dominated the early-season evolution of PAD 42, at that time a much shallower, desiccating water body, as shown by extreme non-steady-state heavy-isotope enrichment. The subsequent evolution of PAD 5 between June and August 2001 was dominated by evaporative enrichment, yet PAD 42 became prominently depleted as a result of an influx of Athabasca River water during a summer high-water event (after Wolfe et al. 2002).

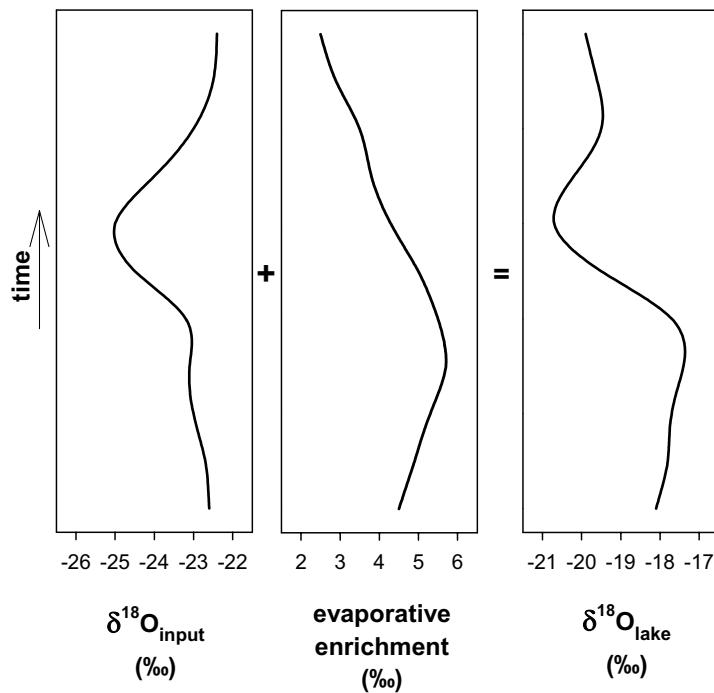
Various other factors can also potentially affect the regularity of the seasonal cycle, including variation in the timing and abundance of precipitation, which may force a lake across key hydrologic thresholds. Particularly strong shifts accompany the development of seasonal or perennial closure of a lake, for example, because of the rapid onset of non-steady-state evaporative enrichment (e.g., Wolfe et al. 1996). Seasonal variations in water-levels can also influence important processes like snowmelt bypassing, which can occur when high water-levels lead to rapid flushing of snowmelt under or around ice cover with minimal mixing, potentially leading to under-representation of isotopically-depleted winter precipitation in a lake's water budget (e.g., Edwards and McAndrews 1989). Perhaps most fundamentally, climate variability and change can be expected to affect the isotopic baseline provided by the LMWL through shifts in the range and weighted-mean isotopic composition of annual precipitation, possibly in company with temperature change and/or shifting seasonality of precipitation, as well as through alteration of the LEL due to changes in relative humidity and the isotopic composition of atmospheric moisture.

#### **Water isotope tracers in paleolimnology**

Development of water isotope records from lake sediments is typically undertaken with the goal of reconstructing the isotopic history of the overlying lake water, as the basis for inferences about paleoclimate and paleohydrology. The majority of such investigations have focused on the use of specific carbonate or organic sediment constituents as oxygen-isotope archives, building upon pioneering studies by Stuiver (1968, 1970) on lacustrine carbonates and Edwards and McAndrews (1989) on algal cellulose. Promising results have also been achieved using other substrates, including biogenic silica as an alternative oxygen-isotope archive (Shemesh et al. 2001) and kerogen and lipids as hydrogen-isotope archives (Sternberg 1988; Krishnamurthy et al. 1995; Sauer et al. 2001b; Huang et al. 2002). Although advances in the development of hydrogen-isotope archives may eventually afford the opportunity for simultaneous reconstruction of both  $\delta^{18}\text{O}$  and  $\delta^2\text{H}$  histories, only single-isotope records have yet been produced. As a result, the interpretation of lake water isotopic history is fundamentally dependent on the ability to partition shifts in lake water  $\delta^{18}\text{O}$  (or  $\delta^2\text{H}$ ) into MWL- and LEL-parallel components, as shown schematically in Figure 6. Various strategies can be employed to deconvolute lake water  $\delta^{18}\text{O}$  histories, including use of independently derived records of paleo-precipitation  $\delta^{18}\text{O}$  to account for variations in input water composition, thus allowing direct resolution of lake-specific changes in water balance (e.g., Edwards and Fritz 1988; Wolfe et al. 2000, 2001a). The latter can also be achieved to varying degrees of confidence by comparing inferred lake water  $\delta^{18}\text{O}$  records from multiple lakes in the same region spanning a range of hydrologic sensitivities, on the assumption that they share a common input water  $\delta^{18}\text{O}$  history controlled by the isotopic composition of regional precipitation (e.g., Edwards et al. 1996). Clues from other indicators in lake sediment records (e.g.,  $\delta^{13}\text{C}$  or  $\delta^{15}\text{N}$  as nutrient isotope tracers or other biological proxies like diatoms) can also inform or constrain hydrologic interpretations (e.g., Wolfe et al. 1996; Hammarlund et al. 1997).

Comprehensive discussions of archive-specific methods and interpretation of lake sediment oxygen isotope records have been presented by Edwards and McAndrews (1989), Talbot (1990), Talbot and Kelts (1990), Edwards (1993), Holmes (1996), Li and Ku (1997), Ito (2001), Shemesh et al. (2001), Wolfe et al. (2001b) and others. Lake sediment oxygen-isotope studies at high latitudes have mainly been conducted as part of multidisciplinary investigations aimed at documenting regional late-Glacial and Holocene climatic and hydrological history (e.g., Anderson et al. 2001; Shemesh et al. 2001; Hammarlund et al. 2002; Hu and Shemesh 2003), and paleohydrological conditions associated with the advance and retreat of the circumpolar boreal treeline (e.g. Wolfe et al. 1996; MacDonald et al., this volume).

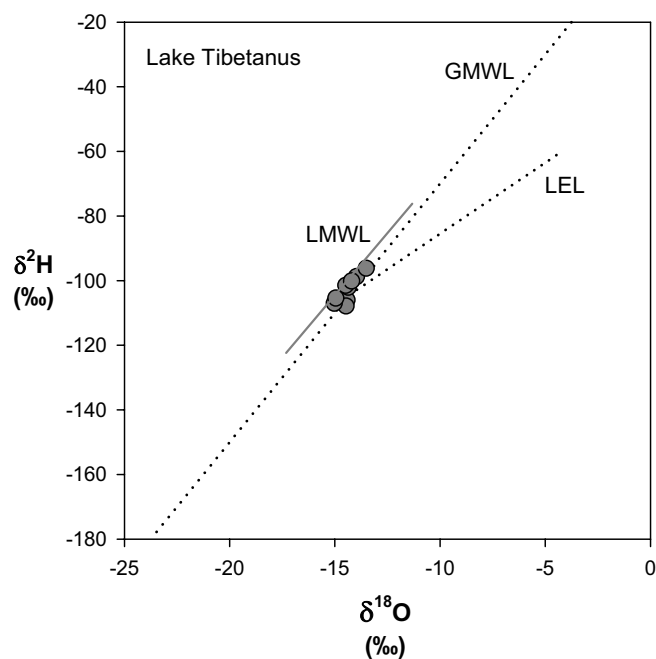
Below we highlight two examples from recent investigations demonstrating, respectively, the derivation and interpretation of millennial-scale MWL-parallel fluctuations in lake water  $\delta^{18}\text{O}$  inherited by sedimentary carbonates in a groundwater-fed lake in northern Sweden, and the analysis of decadal-scale LEL-parallel changes in the oxygen-isotope composition of a lake in northern Canada recorded by algal cellulose.



*Figure 6.* Schematic diagram showing that changes in lake water  $\delta^{18}\text{O}$  over time are controlled by a combination of changes in the isotopic composition of input waters, which should occur parallel to the GMWL (or LMWL) in  $\delta^{18}\text{O}$ - $\delta^2\text{H}$  space, modified by changes in the extent of secondary evaporative enrichment, which occur along a shallower slope parallel to the LEL. The equivalent hydrogen-isotope input and evaporative enrichment records would obviously display similar trends, although the MWL-LEL geometry would result in a differing lake water  $\delta^2\text{H}$  history.

*Lake Tibetanus, Sweden*

Abisko National Park, northern Sweden, is situated east of the main drainage divide of the Scandes mountain range, close to the Norwegian border. Following the establishment of the Abisko Scientific Research Station 100 years ago, numerous ecological research projects have been carried out in this subarctic area, many of which have focused on the distinct climatic and vegetational gradients, particularly the altitudinal forest-tundra ecotone. Holocene vegetation dynamics are relatively well known through paleoecological investigations of peat sequences and lake sediments (Sonesson 1968, 1974; Barnekow 1999, 2000), and the climatic forcing of past environmental change in the area has received increased attention as part of multi-disciplinary research based at the Climate Impacts Research Centre at Abisko since the late 1990s (e.g., Bigler et al. 2002).



*Figure 7.* Plot of  $\delta^{18}\text{O}$  versus  $\delta^2\text{H}$  values for samples of lake water collected at intervals over a three-year period (1995-98) from Lake Tibetanus, northern Sweden ( $68^{\circ}20'\text{N}$ ,  $18^{\circ}42'\text{E}$ ), reported by Hammarlund et al. (2002). The LMWL was estimated from isotopic data obtained on samples of local precipitation and groundwater and the LEL was calculated based on local climate normals and data from the Global Network for Isotopes in Precipitation (IAEA/WMO 2001). Owing to the short water residence time, the lake water isotopic composition is strongly controlled by that of inflowing groundwater with negligible evaporative enrichment, even during the summer months. Independent evidence suggests that rapid flushing has characterized the lake throughout its history and hence that reconstructed lake water  $\delta^{18}\text{O}$  should be a good proxy for the  $\delta^{18}\text{O}$  of local paleoprecipitation.

Multi-proxy investigations of the sediments underlying Lake Tibetanus, a small hardwater lake within the upper mountain-birch zone close to Abisko, have yielded particularly crucial information, including the development of a paleo-precipitation  $\delta^{18}\text{O}$  history, derived through coupling of paleo-isotope data obtained from sedimentary carbonate with pollen-inferred paleotemperature estimates (Hammarlund et al. 2002). As revealed in Figure 7, the modern isotope hydrology of Lake Tibetanus is characterized by complete absence of evaporative enrichment in the lake water, attributable to rapid throughflow of local groundwater. Independent evidence suggests that this hydrologic situation has persisted throughout the lake's existence (Hammarlund et al. 1997) and thus the lake water  $\delta^{18}\text{O}$  history should be characterized by purely MWL-parallel variability.

$\delta^{18}\text{O}$  records were obtained on three different carbonate components from a sediment sequence spanning the last 10,000 years (Figure 8). The longest record was developed from fine-grained sedimentary calcite, originating primarily from photosynthesis in submerged *Chara* algae during early summer, while slightly shorter records were gained from analyses of aragonitic shells of *Pisidium* sp. molluscs and calcitic valves of adult *Candona candida* ostracodes precipitating, respectively, throughout the summer and in late autumn. Consistent oxygen-isotope offsets between the three records can be

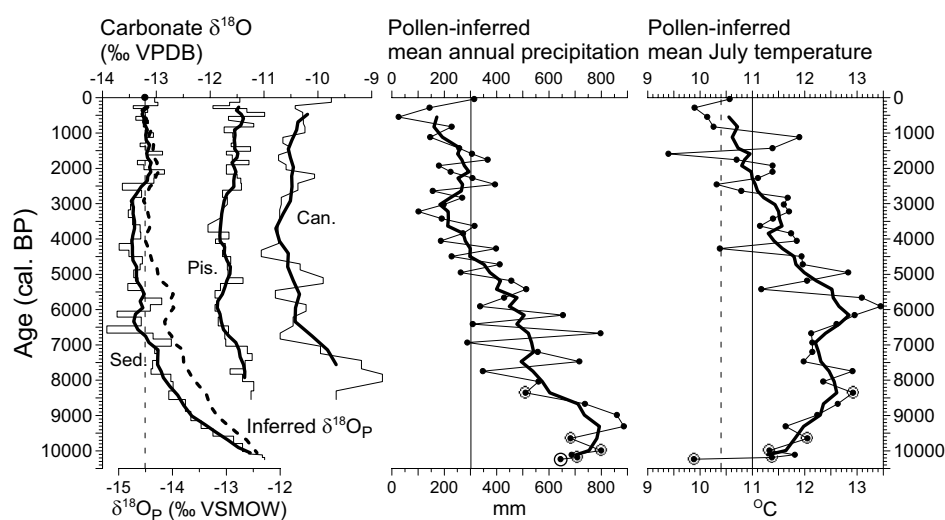


Figure 8. Oxygen-isotope records for a core from Lake Tibetanus plotted against calibrated radiocarbon age, along with pollen-inferred precipitation and temperature, based on data from Hammarlund et al. (2002). Samples with poor modern pollen analogues are circled. Thick lines represent five-point running averages. Modern temperature and precipitation values for Abisko are shown by vertical lines (dashed line represents calculated modern mean July air-temperature at Lake Tibetanus). Sed. = fine-grained sedimentary carbonate (primarily *Chara* calcite); Pis. = *Pisidium* sp. mollusc aragonite; Can. = adult *Candona candida* ostracode calcite. The heavy dashed line represents the inferred  $\delta^{18}\text{O}$  of local paleo-precipitation ( $\delta^{18}\text{O}_p$ ) after accounting for temperature-dependent fractionation between sedimentary carbonate and lake water using pollen-inferred mean July temperature.

attributed to a combination of mineralogical, biological and temperature-dependent effects (the latter related to the differing annual periods of calcification).

Based on the assumption of stable open-drainage conditions resembling the modern hydrological situation throughout the lake's history, long-term changes in carbonate  $\delta^{18}\text{O}$  were interpreted as reflecting variations in lake water  $\delta^{18}\text{O}$  inherited from precipitation  $\delta^{18}\text{O}$ , modified slightly due to temperature-dependent variations in carbonate-water equilibrium isotope fractionation. The pollen-based reconstruction of mean July air temperature was used to account for the effect of changing water temperature on the sedimentary carbonate  $\delta^{18}\text{O}$  record, assuming temperature sensitivity of  $-0.25\text{‰/K}$  (Friedman and O'Neil 1977). Since inferred temperatures were similar to present at the beginning and end of the record, but warmer during the intervening period, this temperature correction resulted in a modest increase in inferred lake water  $\delta^{18}\text{O}$  throughout the mid-part of the record (see Figure 8).

Comparison of the derived paleo-precipitation  $\delta^{18}\text{O}$  record and the pollen-based temperature reconstruction from Lake Tibetanus reveals clear evidence for changing temporal isotope-temperature relations over the Holocene at this site. As addressed in detail by Hammarlund et al. (2002), use of the traditional "isotope paleothermometer", based on the observed modern spatial relation between  $\delta^{18}\text{O}$  of local amount-weighted mean annual precipitation and mean annual temperature of about  $+0.7\text{‰/K}$  (Dansgaard 1964), is only applicable over the past ca. 6000 years. Evidently, significantly different and variable  $\delta^{18}\text{O}$ -MAT relations prevailed 10,000 to 6000 years ago, presumably reflecting substantially different atmospheric and oceanic circulation patterns than those of the present. As suggested by Hammarlund et al. (2002), these differences likely included enhanced westerly air-mass circulation leading to relatively moist maritime conditions in response to high summer insolation, elevated sea-surface temperatures in the Norwegian Sea and steep meridional pressure gradients. The subsequent transition to drier conditions, which is clearly reflected in the pollen-based reconstruction of mean annual precipitation shown in Figure 8, was accompanied by major changes in forest extent and composition, recorded unequivocally by pollen and plant macrofossil data (Barnekow 1999).

#### *Jemis Lake, Canada*

The Peace-Athabasca Delta (PAD), situated at the confluence of the Peace, Athabasca and Fond-du-Lac (Lake Athabasca) drainages in northern Alberta, Canada, is an extensive high latitude fluvio-deltaic complex of considerable cultural, historical and ecological significance (e.g., Peace-Athabasca Delta Project Group 1973; Prowse et al. 1996). The PAD is also a key node in the Mackenzie River basin, the major North American source of freshwater to the Arctic Ocean. Concerns about the combined influence of climate change, regulation of Peace River flow due to hydro-electric power generation, increasing consumptive use of Athabasca River water associated with tar sands development, and changes in land use upstream have led to numerous environmental studies in the PAD over the past 30 years. Many of these investigations have focussed on the frequency and severity of periodic ice-jam floods on the Peace and Athabasca rivers, which are believed to provide crucial fluxes of water and nutrients to lakes in the

delta that are perched beyond the reach of normal seasonal high-water flooding from these two rivers (e.g., see Prowse and Conly 2000). Increasing attention is also being paid to the implications downstream in the Mackenzie River system.

Jemis Lake, a small shallow water body located centrally in the PAD, has been targeted by a number of investigators as being potentially representative of broader conditions in the delta over time, as well as being relatively well-known to the residents of Fort Chipewyan, the major local settlement. Seasonal monitoring of the isotopic composition of Jemis Lake as part of longer term isotope hydroclimatology studies in the PAD suggests that the water balance of this lake (Figure 9), like many others in the delta, is strongly controlled by the opposing effects of evaporation, leading to heavy-isotope enrichment, and periodic inflow of isotopically depleted river water and precipitation (see also Figure 5). Because river water inputs to Jemis Lake and local precipitation have similar isotopic compositions, fluctuations in the lake's water balance are expressed as LEL-parallel shifts in  $\delta^{18}\text{O}$ - $\delta^2\text{H}$  space, which can thus be translated directly into shifting

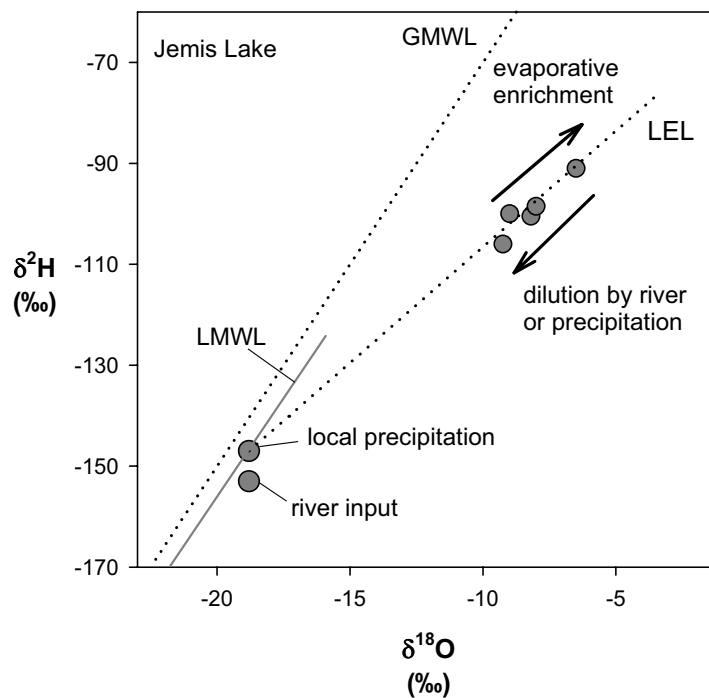


Figure 9. Lake water  $\delta^{18}\text{O}$  and  $\delta^2\text{H}$  data from samples collected over two years (2000-2002) from Jemis Lake in the Peace-Athabasca Delta, Canada ( $58^{\circ}03'\text{N}$ ;  $111^{\circ}05'\text{W}$ ). Shown for reference is the calculated Local Evaporation Line (LEL) for lakes fed by local amount-weighted mean annual precipitation, based on local climate normals and data from the Canadian Network for Isotopes in Precipitation (Birks et al. 2002; Gibson and Edwards 2002). Jemis Lake receives input from precipitation and river water, which both have similar isotopic compositions, thus leading to LEL-parallel shifts in lake water composition, regardless of source, in response to changing water balance.

E/I ratio using equation (3). Indeed, consideration of reconstructed lake water  $\delta^{18}\text{O}$  obtained from algal cellulose in a short core of sediment from Jemis Lake suggests that changes in the isotopic composition of lake water throughout at least the past 150 years (and perhaps much longer; Wolfe et al. 2002) have also been strongly controlled by LEL-parallel fluctuations, as revealed by strong inverse correspondence between inferred E/I and an independently derived flood history (Figure 10). Such insight and context are critical to understanding the hydro-ecological evolution of the Peace-Athabasca Delta, both because of its substantial natural heritage value and because of overarching concerns about the responsible stewardship of water resources within the Mackenzie River system as a whole.

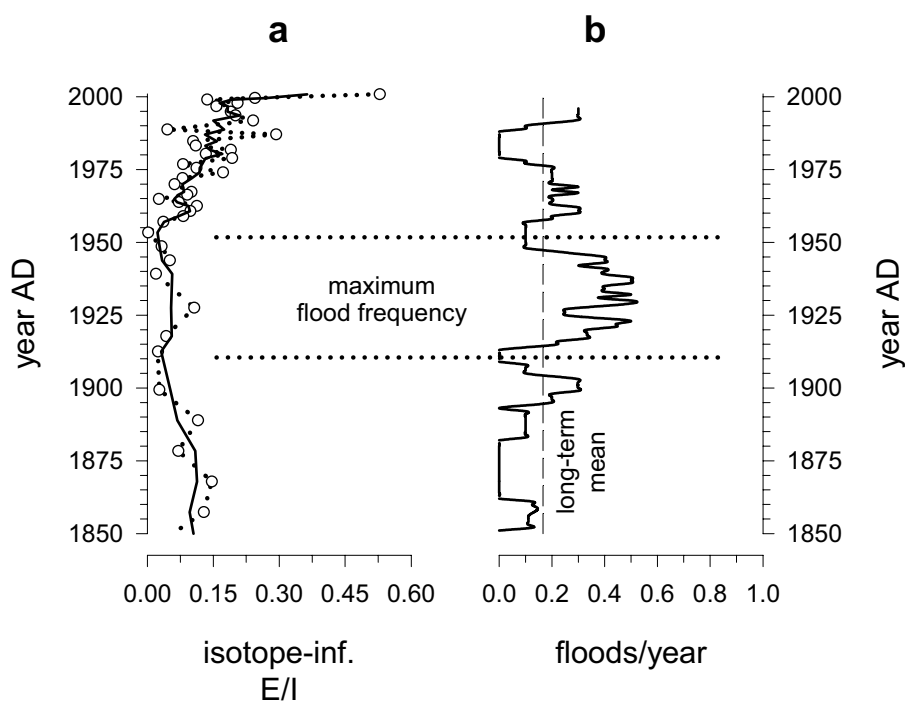


Figure 10. (a) Speculative isotope-inferred history of evaporation/inflow ratio (E/I) in Jemis Lake AD 1850-2000, based on lake water  $\delta^{18}\text{O}$  reconstructed from algal cellulose in a short sediment core (after Wolfe et al. 2002). E/I was calculated using equation (3), assuming input of either river water or precipitation approximating the  $\delta^{18}\text{O}$  of modern local mean annual precipitation (see Figure 9). The chronology was developed from  $^{210}\text{Pb}$  and  $^{14}\text{C}$  data. The solid line on the E/I plot is a three-point running mean. (b) Peace River spring ice-jam flood frequency record in the Peace-Athabasca Delta derived from anecdotal and historical sources by Timoney et al. (1997), expressed as a 10-year mean. The water balance of Jemis Lake has apparently fluctuated in concert with flood frequency throughout the past 150 years, as shown clearly by the inverse relation between isotope-inferred E/I and estimated floods/year, with particularly well-marked depiction of the prolonged period of wetter conditions between about 1910 and 1955.

### Summary and future perspectives

This chapter has outlined the major features of water-isotope labelling in the hydrological cycle, highlighting the characteristic signals in high latitude lakes that may provide clues to interpret stratigraphic variations in sediment cores. Although lakes respond individually, the strongest signals at seasonal time scales in most water bodies having short hydraulic residence times are likely to derive from snowmelt influx and evaporative enrichment. Samples from lake sediment cores tend to naturally average and integrate seasonal signals (as do the waters in lakes having long residence times), thus often affording the opportunity to resolve longer term fluctuations in the isotopic composition of lake water into two respective components, one reflecting shifting input water composition (and hence expected to vary parallel to the Global or Local Meteoric Water Line in  $\delta^{18}\text{O}$ - $\delta^2\text{H}$  space) and the other reflecting varying evaporative enrichment along trajectories parallel to the Local Evaporation Line. Deconvolution of MWL-parallel signals and associated estimates of the isotopic composition of paleo-precipitation may provide direct links to global paleo-precipitation isotope fields, analogous to those afforded by high latitude ice cores (e.g., Rozanski et al. 1997), whereas LEL-parallel signals provide the basis for reconstructing local hydroclimate (e.g., MacDonald et al. 1993).

Future advances in the application of water-isotope tracers in high latitude lakes are likely to be realized from the development of coupled water-isotope records, using new archive materials to reconstruct lake water isotopic history in  $\delta^{18}\text{O}$ - $\delta^2\text{H}$  space, thus permitting fuller and more sophisticated paleohydrologic and paleoclimatic interpretation.

### Acknowledgements

We wish to acknowledge support received from a number of agencies in our studies of high latitude isotope hydrology and paleohydrology, including the Natural Sciences and Engineering Research Council of Canada, Environment Canada, Indian and Northern Affairs Canada (and especially the Northern Scientific Training Program), the British Columbia Hydro and Power Authority, and the Swedish Research Council, as well as the residents of the various communities in which we have worked. The comments of the editors and an anonymous reviewer led to considerable improvements in our contribution.

### References

- Anderson L., Abbott M.B. and Finney B.P. 2001. Holocene climate inferred from oxygen isotope ratios in lake sediments, central Brooks Range, Alaska. *Quat. Res.* 53: 313-321.
- Araguás-Araguás L., Froehlich K. and Rozanski K. 2000. Deuterium and oxygen-18 isotope composition of precipitation and atmospheric moisture. *Hydrol. Proc.* 14: 1341-1355.
- Barnekow L. 1999. Holocene tree-line dynamics and inferred climatic changes in the Abisko area, northern Sweden, based on macrofossil and pollen records. *The Holocene* 9: 253-265.
- Barnekow L. 2000. Holocene regional and local vegetation history and lake-level changes in the Torneträsk area, northern Sweden. *J. Paleolim.* 23: 399-420.

- Bigler C., Larocque I., Peglar M., Birks H.J.B. and Hall R.I. 2002. Quantitative multiproxy assessment of long-term patterns of Holocene environmental change from a small lake near Abisko, northern Sweden. *The Holocene* 12: 481-96.
- Birks S.J., Gibson J.J., Gourcy L., Aggarwal P.K. and Edwards T.W.D. 2002. Maps and animations offer new opportunities for studying the global water cycle. *Eos Trans. AGU* 83: 406 plus electronic supplement at: [http://www.agu.org/eos\\_elec/eeshome.html](http://www.agu.org/eos_elec/eeshome.html)
- Burgman J.O., Calles B. and Westman F. 1987. Conclusions from a ten year study of oxygen-18 in precipitation and runoff in Sweden. Symposium on Isotope Techniques in Water Resources Development. International Atomic Energy Agency, Vienna, 30 March-3 April 1987, IAEA-SM-299/107.
- Burse G.G., Edwards T.W.D. and Frapce S.K. 1991. Water balance and geochemistry studies in a tundra watershed, District of Keewatin, N.W.T. In: Prowse T.D. and Ommanney C.S.L. (eds), *Northern Hydrology: Selected Perspectives*. National Hydrology Research Institute Symposium No. 6, Environment Canada, pp. 17-31.
- Clark I.D. and Fritz P. 1997. *Environmental Isotopes in Hydrogeology*. CRC Press/Lewis Publishers, Boca Raton, Florida, USA, 328 pp.
- Craig H. 1961. Isotopic variations in meteoric waters. *Science* 133: 1702-1703.
- Craig H. and Gordon L.I. 1965. Deuterium and oxygen-18 variations in the ocean and marine atmosphere. In: E. Tongiorgi (ed.), *Stable Isotopes in Oceanographic Studies and Paleotemperatures*. Cons. Naz. Rich. Lab. Geol. Nucl. Pisa, Italy, pp. 9-130.
- Dansgaard W. 1964. Stable isotopes in precipitation. *Tellus* 16: 436-468.
- Edwards T.W.D. 1993. Interpreting past climate from stable isotopes in continental organic matter. In: Swart P.K., Lohmann K.C., McKenzie J. and Savin S. (eds), *Climate Change in Continental Isotopic Records*. Geophysical Monograph 78, American Geophysical Union, Washington, pp. 333-341.
- Edwards T.W.D. and Fritz P. 1988. Stable isotope paleoclimate records for southern Ontario: comparison of results from marl and wood. *Can. J. Earth Sci.* 25: 1397-1406.
- Edwards T.W.D. and McAndrews J.H. 1989. Paleohydrology of a Canadian Shield lake inferred from  $^{18}\text{O}$  in sediment cellulose. *Can. J. Earth Sci.* 26: 1850-1859.
- Edwards T.W.D., Wolfe B.B. and MacDonald G.M. 1996. Influence of changing atmospheric circulation on precipitation  $\delta^{18}\text{O}$ -temperature relations in Canada during the Holocene. *Quat. Res.* 46: 211-218.
- Friedman I. and O'Neil J.R. 1977. Compilation of stable isotope fractionation factors of geochemical interest. In: Fleischer M. (ed.), *Data of Geochemistry*. U.S. Geol. Surv. Prof. Paper, 440-KK, pp. 1-12.
- Fritz P. and Fontes J.C. 1980. Introduction. In: Fritz P. and Fontes J.C. (eds), *Handbook of Environmental Isotope Geochemistry*. Volume 1. The Terrestrial Environment, A. Elsevier Scientific Publishers, Amsterdam, pp. 1-19.
- Gibson J.J. 2001. Forest-tundra water balance signals traced by isotopic enrichment in lakes. *J. Hydrol.* 251: 1-13.
- Gibson J.J. 2002. Short-term evaporation and water budget comparisons in shallow arctic lakes using non-steady isotope mass balance. *J. Hydrol.* 264: 247-266.
- Gibson J.J. and Edwards T.W.D. 2002. Regional surface water balance and evaporation-transpiration partitioning from a stable isotope survey of lakes in northern Canada. *Glob. Biogeochem. Cyc.* 16: 10.1029/2001GB001839.
- Gibson J.J., Edwards T.W.D., Bursey G.G. and Prowse T.D. 1993. Estimating evaporation using stable isotopes: quantitative results and sensitivity analysis for two catchments in northern Canada. *Nordic Hydrol.* 24: 79-94.
- Gibson J.J., Prepas E.E. and McEachern P. 2002. Quantitative comparison of lake throughflow, residency, and catchment runoff using stable isotopes: modelling and results from a regional survey of Boreal lakes. *J. Hydrol.* 262: 128-144.

- Gonfiantini R. 1986. Environmental isotopes in lake studies. In: Fritz P. and Fontes J.C. (eds), *Handbook of Environmental Isotope Geochemistry, Volume 2, The Terrestrial Environment*, B. Elsevier Scientific Publishers, Amsterdam, pp. 113-168.
- Hammarlund D., Aravena R., Barnekow L., Buchardt B. and Possnert G. 1997. Multi-component carbon isotope evidence of early Holocene environmental change and carbon-flow pathways from a hardwater lake in northern Sweden. *J. Paleolim.* 18: 219-233.
- Hammarlund D., Barnekow L., Birks H.J.B., Buchardt B. and Edwards T.W.D. 2002. Holocene changes in atmospheric circulation recorded in the oxygen-isotope stratigraphy of lacustrine carbonates from northern Sweden. *The Holocene* 12: 355-367.
- Hammarlund D., Björck S., Buchardt B., Israelson C. and Thomsen C. 2003. Rapid hydrological changes during the Holocene revealed by stable isotope records of lacustrine carbonates from Lake Igelsjön, southern Sweden. *Quat. Sci. Rev.* 22: 195-212.
- Holmes J.A. 1996. Trace-element and stable-isotope geochemistry of non-marine ostracod shells in Quaternary paleoenvironmental reconstruction. *J. Paleolim.* 15: 223-235.
- Horita J. and Wesolowski D. 1994. Liquid-vapour fractionation of oxygen and hydrogen isotopes of water from the freezing to the critical temperature. *Geochim. Cosmochim. Acta* 58: 3425-3437.
- Hu F.S. and Shemesh A. 2003. A biogenic-silica  $\delta^{18}\text{O}$  record of climatic change during the last glacial-interglacial transition in southwestern Alaska. *Quat. Res.* 59: 379-385.
- Huang Y., Shuman B., Wang Y. and Webb III T. 2002. Hydrogen isotope ratios of palmitic acid in lacustrine sediments record late Quaternary climate variations. *Geology* 30: 1103-1106.
- IAEA/WMO 2001. Global Network for Isotopes in Precipitation. The GNIP Database. Accessible at: <http://isohis.iaea.org>
- Ito E. 2001. Application of stable isotope techniques to inorganic and biogenic carbonates. In: Last W.M. and Smol J.P. (eds), *Tracking Environmental Change Using Lake Sediments: Volume 2: Physical and Chemical Techniques*. Kluwer Academic Publishers, Dordrecht, The Netherlands, pp. 351-371.
- Jouzel J. and Merlivat L. 1984. Deuterium and oxygen-18 in precipitation, modelling of the effects during snow formation. *J. Geophys. Res.* 89: 11749-11757.
- Krishnamurthy R.V., Syrup K.A., Baskaran M. and Long A. 1995. Late glacial climate record of midwestern United States from the hydrogen isotope ratio of lake organic matter. *Nature* 269: 1565-1567.
- Leng M.J. and Anderson N.J. 2003. Isotopic variation in modern lake waters from western Greenland. *The Holocene* 13: 605-611.
- Li H.-C. and Ku T.-L. 1997.  $\delta^{13}\text{C}$ - $\delta^{18}\text{O}$  covariance as a paleohydrological indicator for closed-basin lakes. *Palaeogeogr. Palaeoclim. Palaeoecol.* 133: 69-80.
- MacDonald G.M., Edwards T.W.D., Moser K.A., Pienitz R. and Smol J.P. 1993. Rapid response of treeline vegetation and lakes to past climate warming. *Nature* 361: 243-246.
- Maric R. 2003. Coupled isotope-mass balance studies in tundra lakes, Lac de Gras area, N.W.T., Canada. M.Sc. Thesis, University of Waterloo, 145 pp.
- Merlivat L. and Jouzel J. 1979. Global climatic interpretation of the deuterium-oxygen-18 relationship for precipitation. *J. Geophys. Res.* 84: 5029-5033.
- Peace-Athabasca Delta Project Group (PADPG) 1973. *Peace-Athabasca Delta Project, Technical Report and Appendices: Volume 1, Hydrological Investigations; Volume 2, Ecological Investigations*, Alberta and Saskatchewan, Canada.
- Prowse T.D. and Conly F.M. 2000. Multiple-hydrologic stressors of a northern delta ecosystem. *J. Aquat. Ecosystem Stress & Recover* 8: 17-26.
- Prowse T.D., Peters D.L. and Marsh P. 1996. Modelling the water balance of Peace-Athabasca Delta perched basins. Task D.4 – Perched Basins Water Balance. Peace-Athabasca Technical Studies, Fort Chipewyan, Alberta, Canada.
- Rozanski K., Araguás-Araguás L. and Gonfiantini R. 1993. Isotopic patterns in modern global precipitation. In: Swart P.K., McKenzie J., Lohmann K.C. and Savin S. (eds), *Climate Change*

- in Continental Isotopic Records. Geophysical Monograph 78, American Geophysical Union, Washington, pp. 1-36.
- Rozanski K., Johnsen S.J., Schotterer U. and Thompson L.G. 1997. Reconstruction of past climates from stable isotope records of palaeo-precipitation preserved in continental archives. *Hydrol. Sci.* 142: 725-745.
- Sauer P.E., Miller G.H. and Overpeck J.T. 2001a. Oxygen isotope ratios of organic matter in arctic lakes as a paleoclimate proxy: field and laboratory investigations. *J. Paleolim.* 25: 43-64.
- Sauer P.E., Eglinton T.I., Hayes J.M., Schimmelmann A. and Sessions A.L. 2001b. Compound-specific D/H ratios of lipid biomarkers from sediments as a proxy for environmental and climatic conditions. *Geochim. Cosmochim. Acta* 65: 213-222.
- Schotterer U., Oldfield F. and Fröhlich K. 1996. GNIP - Global Network for Isotopes in Precipitation. PAGES, Bern, 48 pp.
- Shemesh A., Rosqvist G., Rietti-Shati M., Rubensdotter L., Bigler C., Yam R. and Karlen W. 2001. Holocene climatic change in Swedish Lapland inferred from an oxygen-isotope record of lacustrine biogenic silica. *The Holocene* 11: 447-454.
- Sonesson M. 1968. Pollen zones at Abisko, Torne Lappmark, Sweden. *Botaniska Notiser* 121: 491-500.
- Sonesson M. 1974. Late Quaternary development of the Torneträsk area, North Sweden: 2. Pollen analytical evidence. *Oikos* 25: 288-307.
- Sternberg L.S.L. 1988. D/H ratios of environmental water recorded by D/H ratios of plant lipids. *Nature* 333: 59-61.
- Stuiver M. 1968. Oxygen-18 content of atmospheric precipitation during the last 11,000 years in the Great Lakes region. *Science* 162: 994-997.
- Stuiver M. 1970. Oxygen and carbon isotope ratios of fresh-water carbonates as climatic indicators. *J. Geophys. Res.* 75: 5247-5257.
- Talbot M.R. 1990. A review of the palaeohydrological interpretation of carbon and oxygen isotopic ratios in primary lacustrine carbonates. *Chem. Geol. (Iso. Geosci. Sect.)* 80: 261-279.
- Talbot M.R. and Kelts K. 1990. Paleolimnological signatures from carbon and oxygen isotopic ratios in carbonates from organic carbon-rich lacustrine sediments. In: Katz B.J. (ed.), *Lacustrine Basin Exploration: Case Studies and Modern Analogs*. The American Association of Petroleum Geologists, Tulsa, pp. 99-112.
- Timoney K., Peterson G., Fargey P., Peterson M., McCanny S. and Wein R. 1997. Spring ice-jam flooding of the Peace-Athabasca Delta: Evidence of a climatic oscillation. *Clim. Change* 35: 463-483.
- Wolfe B.B. and Edwards T.W.D. 1997. Hydrologic control on the oxygen-isotope relation between sediment cellulose and lake water, Taimyr Peninsula, Russia: Implications for the use of surface-sediment calibrations in paleolimnology. *J. Paleolim.* 18: 283-291.
- Wolfe B.B., Edwards T.W.D., Aravena R. and MacDonald G.M. 1996. Rapid Holocene hydrologic change along boreal treeline revealed by  $\delta^{13}\text{C}$  and  $\delta^{18}\text{O}$  in organic lake sediments, Northwest Territories, Canada. *J. Paleolim.* 15: 171-181.
- Wolfe B.B., Edwards T.W.D., Aravena R., Forman S.L., Warner B.G., Velichko A.A. and MacDonald G.M. 2000. Holocene paleohydrology and paleoclimate at treeline, north-central Russia, inferred from oxygen isotope records in lake sediment cellulose. *Quat. Res.* 53: 319-329.
- Wolfe B.B., Aravena R., Abbott M.B., Seltzer G.O. and Gibson J.J. 2001a. Reconstruction of paleohydrology and paleohumidity from oxygen isotope records in the Bolivian Andes. *Palaeogeogr. Palaeoclim. Palaeoecol.* 176: 177-192.
- Wolfe B.B., Edwards T.W.D., Beuning K.R.M. and Elgood R.J. 2001b. Carbon and oxygen isotope analysis of lake sediment cellulose: methods and applications. In: Last W.M. and Smol J.P. (eds), *Tracking Environmental Change Using Lake Sediments: Volume 2: Physical*

- and Chemical Techniques. Kluwer Academic Publishers, Dordrecht, The Netherlands, pp. 373-400.
- Wolfe B.B., Edwards T.W.D. and Hall R.I. 2002. Past and present ecohydrology of the Peace-Athabasca Delta, northern Alberta, Canada: water isotope tracers lead the way. *PAGES News* 10: 16-17.
- Wolfe B.B., Edwards T.W.D., Jiang H., MacDonald G.M., Gervais B.R. and Snyder J.A. 2003. Effect of varying oceanicity on early to mid-Holocene palaeohydrology, Kola Peninsula, Russia: isotopic evidence from treeline lakes. *The Holocene* 13: 153-160.

